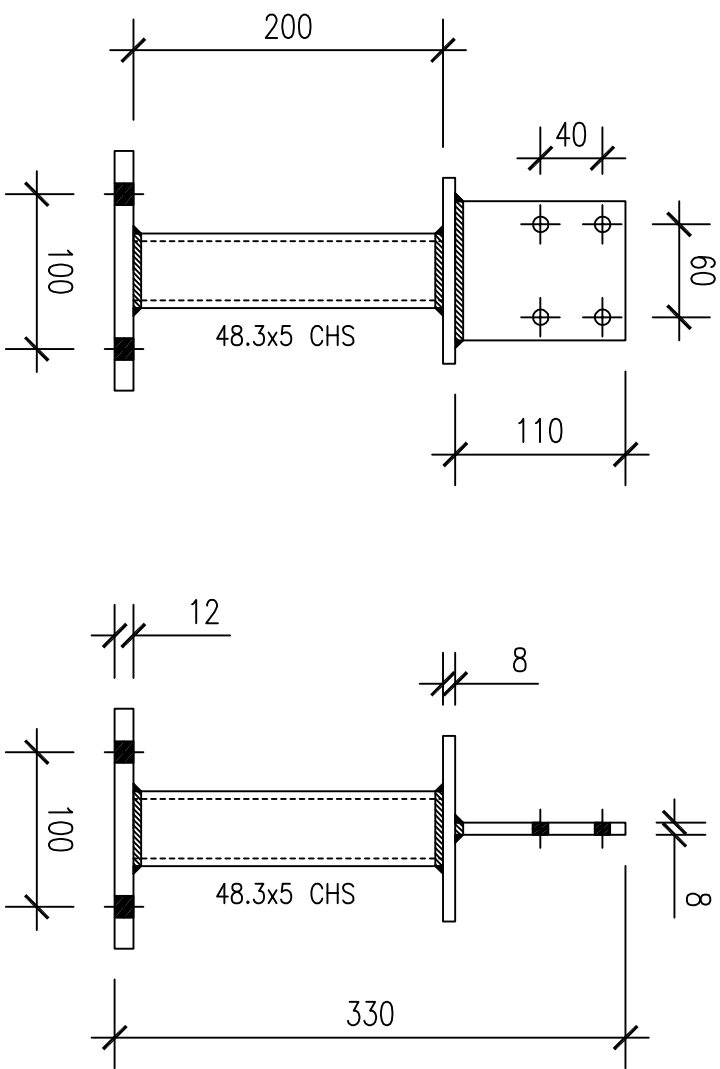


650x650x300 GRADE C30 MASS
CONCRETE BASE OFF MIN. 100
COMPACTED MOT TYPE 1 HARD CORE
TO ACHIEVE A SAFE BEARING PRESSURE
OF 30kN/m² IN NON-AGGRESSIVE SOIL
CONDITIONS.
AREAS OF SOFT SPOTS TO BE REMOVED
DOWN TO FIRM CLAY AND MASS
CONCRETE FILLED USING MIN. GEN1
DESIGNATED CONCRETE OR MAX. 150
COMPACTED LAYERS OF MOT TYPE 1
HARDCORE.

FOUNDATION DETAIL



FIN PLT.
90x110x8 THK.
5CFW
4 NO. 10Ø HOLES
15 EDGE DISTANCE

48.3x5 CHS CAP PLT.
120x120x8 THK.
5CFW

48.3x5 CHS BASE PLT.
155x155x12 THK.
5CFW
4 NO. 14Ø HOLES AT 100 C/C's
28 EDGE DISTANCE
FOR 4 NO. M12 STAINLESS STEEL
STUD ANCHORS INSTALLED IN
STRICT ACCORDANCE WITH
MANUFACTURERS INSTRUCTIONS.

GENERAL NOTES

1. ALL DIMENSIONS ARE IN MILLIMETRES UNLESS NOTED OTHERWISE.
2. DRAWINGS ARE NOT TO BE SCALED.
3. ALL MATERIAL TO BE GRADE 1.4301 (304) STAINLESS STEEL TO BS EN 10088-2.
4. CHS TO BE BRUSHED POLISHED FINISH.
5. ALL FIXINGS TO BE STAINLESS STEEL TO PREVENT BI-METALLIC CORROSION.
6. THE BASE PLATE AND FOUNDATION DESIGN HAS BEEN BASED ON THE FOLLOWING DESIGN PARAMETERS OUTLINED BELOW. FOR PARAMETERS OUTSIDE THESE MAXIMUMS SEEK THE ADVICE OF A STRUCTURAL ENGINEER:
 - a) CANOPY ROOF DIMENSIONS 2.2x1.2m ON PLAN OUT OF TIMBER TRUSSES WITH PLYWOOD DIAPHRAGM WITH CONCRETE/ SLATE TILES OVER FIXED SECURELY TO BUILDING WALL.
 - b) 2 NUMBER 150x150x2.4m MAX. EUROPEAN OAK CANOPY POSTS.
 - c) SITE WIND SPEED OF 29m/s (DYNAMIC PRESSURE = 0.8kN/m²) WITH NO SIGNIFICANT SITE TOPOGRAPHY.
 - d) MAXIMUM COMBINED UNFACTORED CHARACTERISTIC FORCES APPLIED TO BASE POST:

AXIAL LOAD OF 2.36kN (240kg)

LATERAL LOAD OF 3.4kN (346kg)

CANOPY PRODUCTS LTD
Paradise Works
Paradise Street
Ramsgate
BLO 9BS
Tel 01706 82 2665
Fax 01706 82 3333

title
STAINLESS STEEL VERTICAL POST PLATE
BRUSH POLISHED COLUMN SSB/FH0

drawn	RAL	checked	PT	drawing number	
date	15.12.15	date		SSB/FH0	PI
scale	1:20, 1:10		A3		